

## Digital Cabinets Bar Equipment 2-glass door Refrigerator, 15.8 cu.ft, 48"

ITEM # \_\_\_\_\_  
MODEL # \_\_\_\_\_  
NAME # \_\_\_\_\_  
SIS # \_\_\_\_\_  
AIA # \_\_\_\_\_



738122 (KCBB60GB-HC)

Bar Equipment - 2-glass door  
refrigerator, black, 15.8 cubic  
feet, R290 refrigerant  
gas, +33/+41°C

### Short Form Specification

**Item No.** \_\_\_\_\_

Back bar refrigerator with glass doors. Internal and external structure in painted steel and aluminum. Fin & tube condenser to improve the performances in high-temperature environments. Automatic Defrost Cooling System and digital temperature control.  
Heavy duty adjustable shelves and stay-open self-closing doors.

R290 gas in the refrigeration circuit.  
ETL Safety and Sanitation certified.  
3/5 Years warranty.

### Main Features

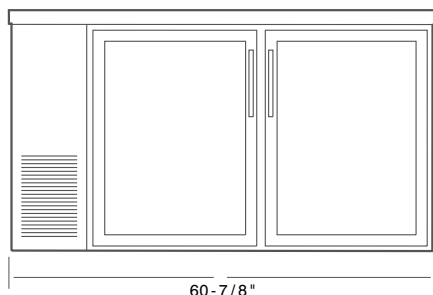
- Fin & Tube Condenser improves performance in high-temperature environments.
- Automatic Defrost Cooling System provides worry-free performance.
- Digital temperature control.
- ~~1/5~~ HP Compressor. **1/3**
- Heavy duty adjustable shelves, easy to handle and keep clean.
- Stay-open Self-Closing doors.
- Hydrocarbon refrigerant gas R290 for the lowest environmental impact (GWP=3) - CFC and HCFC free.

### Construction

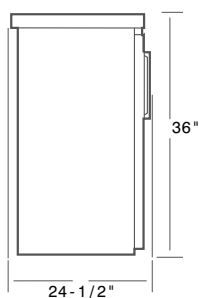
- Painted steel/Painted aluminium exterior and interior.
- Secure and inventory locking lids protect the contents of the unit.

APPROVAL: \_\_\_\_\_

**Front**

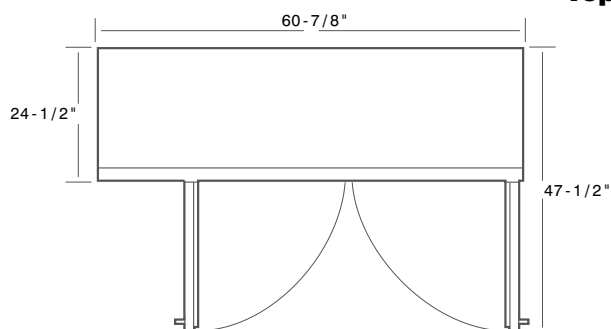


**Side**



**EI** = Electrical connection  
**RI** = Refrigerant Inlet  
**RO** = Refrigerant Outlet

**Top**



### Electric

**Supply voltage:**

738122 (KCBB60GB-HC) 115 V/1 ph/60 Hz

**Electrical power, max:** 0.736 kW

**Plug type:** USA NEMA 5-15P

### Key Information:

<b>Capacity (Cu. Ft.)</b>	15.8
<b>Door hinges:</b>	1 Left+1 Right
<b>External dimensions, Width:</b>	60 7/8" (1546.225 mm)
<b>External dimensions, Depth:</b>	24 1/2" (622.3 mm)
<b>External dimensions, Height:</b>	36 " (914.4 mm)
<b>Number and type of doors:</b>	2 Glass
<b>Number and type of grids (included):</b>	4 - Vynil-Coated Steel
<b>Type of external material:</b>	Black Prepainted Steel
<b>Type of internal material:</b>	304 AISI
<b>Warranty:</b>	3 / 5 years

### Refrigeration Data

<b>Compressor Horsepower:</b>	<del>1/5</del> 1/3
<b>Refrigerant type:</b>	R290
<b>Operating temperature min.:</b>	33.01 °F
<b>Operating temperature max.:</b>	41 °F
<b>Condenser type:</b>	Fin & tube



**Digital Cabinets**  
**Bar Equipment 2-glass door Refrigerator, 15.8 cu.ft, 48"**

The company reserves the right to make modifications to the products without prior notice. All information correct at time of printing.

2017.10.31