



Equipment for the Foodservice Industry

value + quality + service

Salad/Sandwich Prep Tables

CSDW2-60VC



CSDW2-60VC

Features

Features:

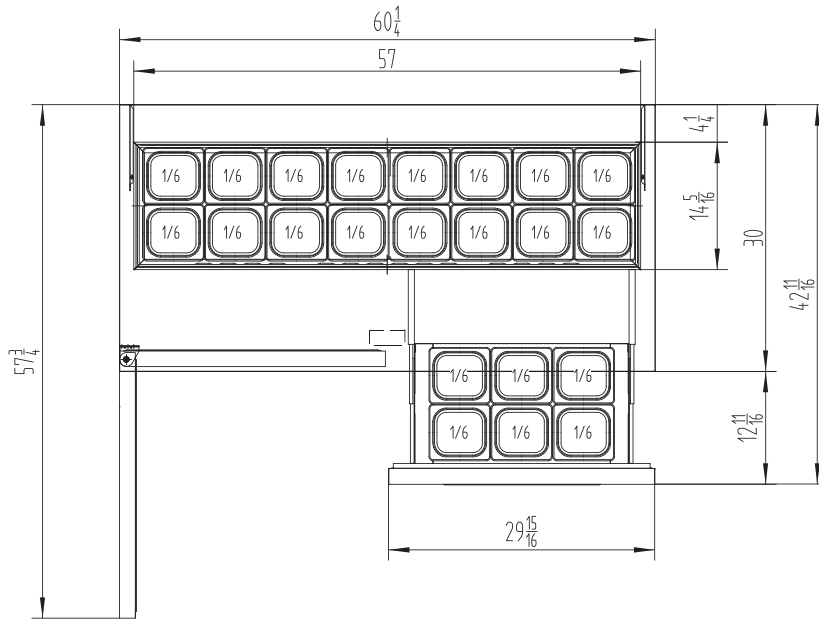
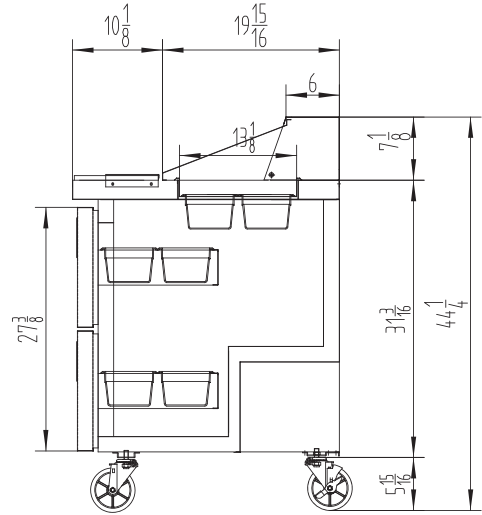
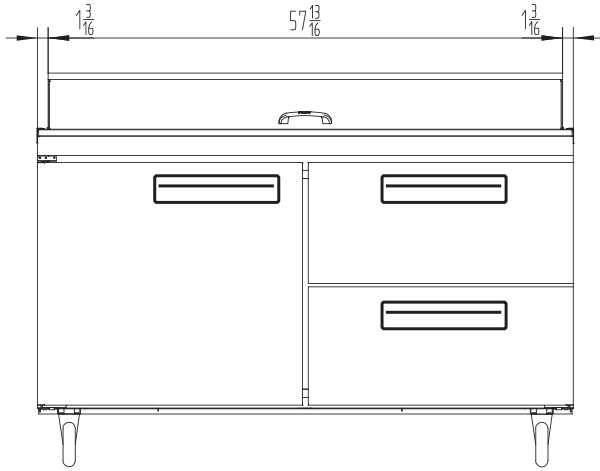
- Front breathing, side mount compressor
- Exterior & interior stainless steel construction
- Heavy duty Embraco compressor
- Self-closing and stay open door
- Efficient refrigeration system
- Recessed door handle
- Standard safety door lock
- Magnetic door gaskets
- Casters for easy movement
- Pre-installed shelves

Warranty:

- Two year parts and labour; Five years on compressor. *For full warranty details visit <https://www.efifoodequip.com/warranty-info.php>*



CSDW2-60VC Specifications



Model	Refrigrant	Doors	Shelves	Dimension (mm) (inch)			HP	Voltage	Amps	Capacity (L) (Cu Ft.)	Net Weight (KG) (LBS)	Temperature Range
				L	D	H						
CSDW2-60VC	R290	1	1	1530	762	1109	1/3	115/60	7.5	510	150	1 ~ 8°C
				60.2	30.0	43.7				18.0	330	33 ~ 45°F

Specifications subject to change without notice.